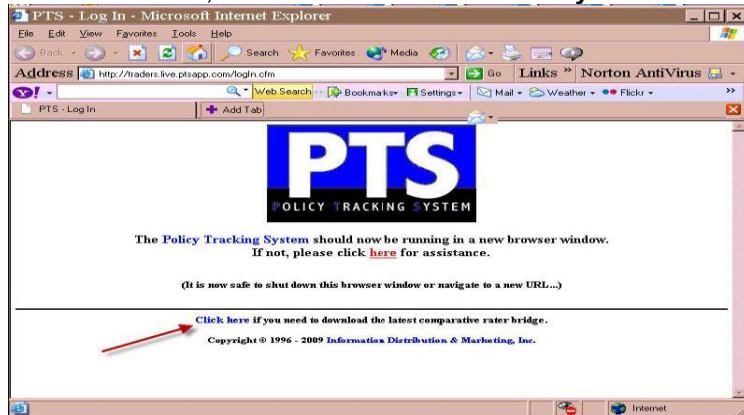
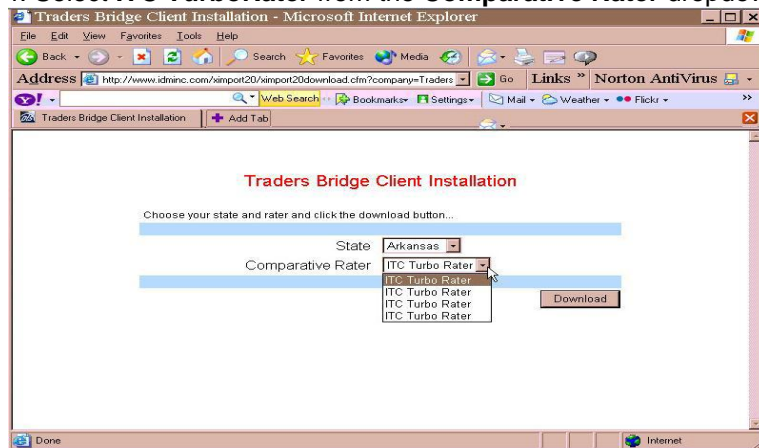


Traders Bridge Installation Instructions

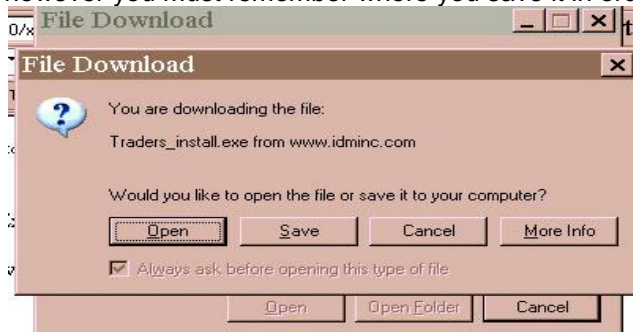
1. Log on to Traders website: <http://traders.live.ptsapp.com/login.cfm>.
2. On this screen, click on the link: **Click here if you need to download the latest comparative rater bridge.**



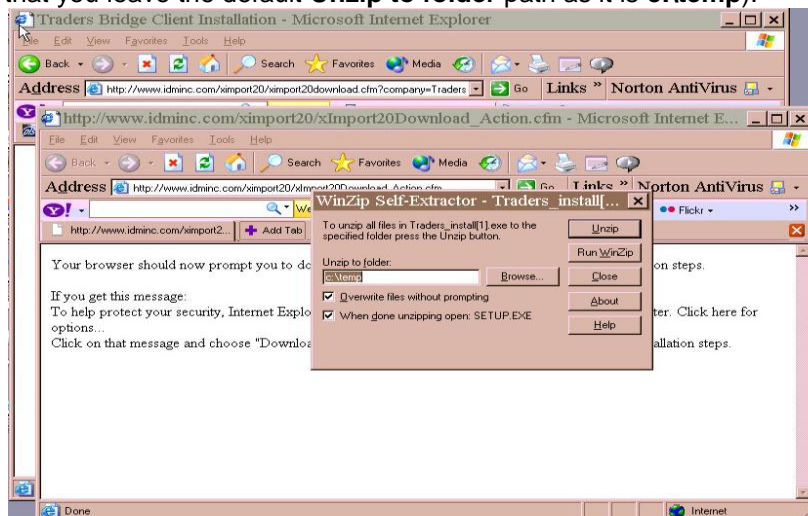
3. Select your state from the **State** entry field dropdown list.
4. Select **ITC TurboRater** from the **Comparative Rater** dropdown list. Then click on the **Download** button.



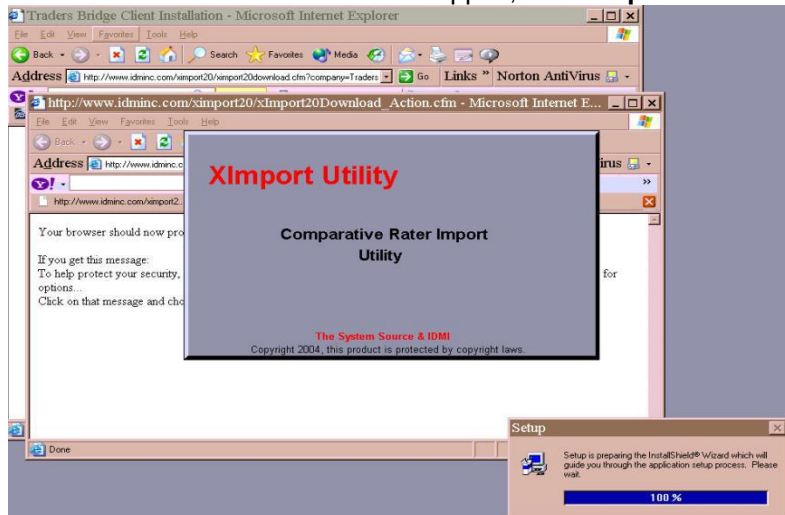
5. A **File Download** box will appear, click on the **Open** button (or **Save** if you wish to first save it to your computer – however you must remember where you save it in order run the installation after the download).



6. To download and unzip the Traders files, click the **Unzip** button on the upper right side of the screen (it is recommended that you leave the default **Unzip to folder** path as it is **c:\temp**).



7. As soon as all of the files have unzipped, the **Setup** installation process will begin.



8. Click on the **Next** button on the **Welcome** screen.

9. Click on **Yes** on the **Software License Agreement** screen.

10. Select the destination path for the bridge file installation if you prefer a path other than the default. **NOTE:** If you are on a network, you may want to select the drive where you want to install the bridge by clicking on the **Browse** button.



11. On the **Select Program Folder** screen, click on the **Next** button.



12. Once the installation is complete, click on the **Finish** button.

NOTE: If you have installed the bridge file to a path other than the default (C:\program Files\XImport20\Traders), you will need to change this path in the Comparative Rater by:

1. In the Comparative Rater, click on **Edit/Producer Codes**.
2. Select Traders and edit the path displayed.
3. Click on **Apply/Done**.